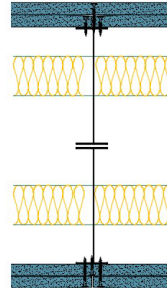


## TWI146-K-60(2x50)(360) - SPEEDLINE System Data Sheet - Version V1 (24-10-23)

Twin SPEEDLINE 146mm 'I' Stud Partition @600mm Ctrs, with 2x Knauf 15mm Soundshield Plus each side, 50+50mm APR



### System Performance Breakdown

Fire Resistance:

BS476 Part 22:1987:

Test Ref & Date or Applied Ref & Report:

Max Height:

Thickness:

Duty Grade: BS 5234: Part 2:1992:

Sound Insulation:

120/120 Minutes (Integrity/Insulation).

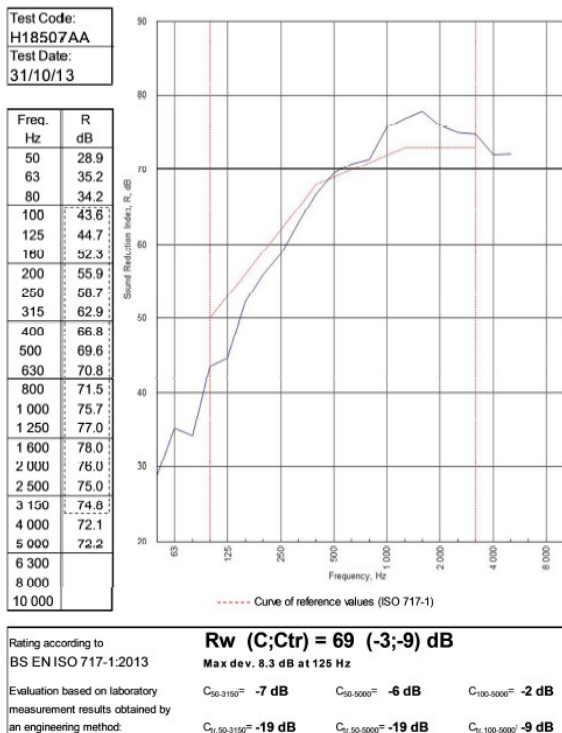
**BMT/FEP/F14077 - BRE Report P102396-1011B**

**Refer to Speedline Specification Clause**

**360 mm.** (At Base Track, Excluding Finishes)

**Severe - Annexes A-F**

**69  $R_w$ dB, -9Ctr** Date Tested or Assessed Against - TWI50-K-60(2x50)(200)



TESTED AT ONE OF THE UKAS ACCREDITED LABORATORIES BELOW

- B.T.C (H-Ref on Graph)
- B.R.E
- AIRO
- S.R.L

Customer: Metsec plc Hepsec Division



BTC 18507A: Page 10 of 13

SPEEDLINE Drywall Systems, Adsetts House, 16 Europa View, Sheffield Business Park, Sheffield, S9 1XH.

Tel: 0114 231 8030.

Email: [enquiries@speedlinedrywall.co.uk](mailto:enquiries@speedlinedrywall.co.uk)

(As per the requirements set out in ISO/IEC 17025:2017 regarding test data the results stated have been carried out by voestalpine Metsec plc as part of the contract to supply Speedline Metal Sections to SIG plc)